

# Please More People!

More Convenience.  
More Product Variety.  
More Satisfied Customers  
and Employees.



From the **WORLD'S LARGEST** manufacturer  
of Individually owned vending equipment.

*Since 1931*

# Take Advantage of Our Factory Direct Programs

Charitable Vending Management has the right program for you!

Call 800-454-2454



## Trimline Refreshment Center

12 Select Snack & 6 Select Cold Drink

A cost effective snacks & refreshment solution in a very small footprint.

Perfect for locations serving 15-40 customers.



## Total Refreshment Center



### GF12

**Snack Merchandiser**

68" x 21"W x 33 1/2"D,  
Shipping Weight 363 lbs  
12 selections, 152 item capacity  
*(Shown with optional 4" legs)*



### HR23

**Snack Merchandiser**

72" x 29 5/16"W x 34 1/8"D,  
Shipping Weight 445 lbs,  
23 selections, 384 item capacity



### HR32

**Snack Merchandiser**

72" x 35 5/32"W x 34 1/8"D,  
Shipping Weight 519 lbs, 32 selections,  
474 item capacity  
Available with air conditioning



### HR40

**Snack Merchandiser**

72" x 41"W x 34 1/8"D,  
Shipping Weight 628 lbs, 40 selections,  
630 item capacity  
Available with air conditioning





**Compact 23/6 Refreshment Center**  
 23 Select Snack & 6 Select Cold Drink  
**Amazing versatility and variety  
 for the smaller location!**

Perfect for locations serving  
 35-55 customers.



**Compact 23/10 Refreshment Center**  
 23 Select Snack & 10 Select Cold Drink  
**Our Most Popular  
 Combination!**

Perfect for locations serving  
 40-60 customers.



**CB300SA**

**Bottle & Can Vendor**

68" x 21"W x 33 1/2"D, Shipping Weight 508 lbs,  
 6 selections, Capacity: 312 - 12 oz cans /  
 144 - 20 oz bottle or combination of cans  
 and bottles, Also vends 8.5 oz cans with optional  
 kit as well as 16.9 oz & 24 oz plastic bottles.



**CB500**

**Bottle & Can Vendor**

72" x 31 1/4"W x 33 1/4"D, Shipping Weight 667 lbs  
 10 selections, Capacity: 500 - 12oz cans /  
 240 - 20 oz bottles or combination of cans and  
 bottles , Also vends 8.5 oz cans with optional kit  
 as well as 16.9 oz & 24 oz plastic bottles.



**CB700**

**Bottle & Can Vendor**

72" x 42"W x 33 1/2"D, Shipping Weight 856 lbs,  
 12 selections, Capacity: 728 - 12 oz cans /  
 322 - 20 oz bottles or combination of cans and bottles  
 Also vends 8.5 oz cans with optional kit  
 as well as 16.9 oz & 24 oz plastic bottles



Refrigerated food, bottled and canned cold beverages. All from one machine!

### All In One Refrigerated Refreshment Center

**45 Selection**

72"H x 41"W x 38"D

Shipping Weight 975 lbs

Selections: 45

Capacity: 95 food items / 180 beverages

Health safety for all trays. Vends food and beverages from the same machine.



**27 Selection**

72"H x 29-1/2"W x 38"D

Shipping Weight 725 lbs

Selections: 27

Capacity: 74 food items / 108 beverages

Health safety for all trays. Vends food and beverages from the same machine.



### CF1000

**Cold Food Satellite**

72" x 22"W x 33 1/2"D,

Shipping Weight 575 lbs,

16 selections, 92 item capacity

Connects to HR23, HR32,

HR40 snack vendors or

SC100 Control Tower.

### FF2000

**Frozen Food Satellite with Optional SC100 Control Tower**

72" x 22"W x 37"D,

Shipping Weight 629 lbs (FF2000),

25 selections, 203 item capacity

Connects to HR23, HR32,

and HR40 snack vendors.



### Corner Café

**Hot Beverage Vendor**

72" x 28"W x 28"D,

Shipping Weight 360 lbs

8 Canisters allow for up to 72 different

combinations of drinks, 487- 7 oz

cup capacity, Adjustable cup

sizing to lip diameter of 3.55"

## Delivery Sensor Technology!



Most equipment models come standard with delivery sensor technology ensuring consistent vend and refund performance. These systems guarantee that the selected item is delivered to the customer or their money is returned.



Snack merchandisers equipped with iVend® delivery sensors.



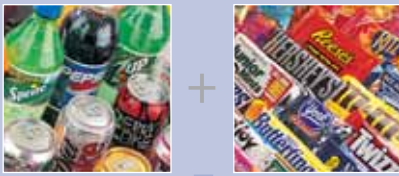
Beverage merchandisers equipped with delivery drop sensor systems guaranteeing product or refund.



8040 University Boulevard • Des Moines, IA 50325

**Tel. 800-454-2454**

**Fax. 515-274-0390**



## Industry Facts You Should Know...

- For every 10 cold drink sales, 6 snacks will be sold
- 54¢ of every \$1 vended is gross profit

## Soft Drink Market Share

WITH ONE OF THESE,  
YOU'RE MISSING  
A BIG PIECE OF  
THE BUSINESS...



If you're a Coke drinker, a Pepsi drinker or any other drink loyalist, you won't be happy with anything else. If you only offer Coke products in your refreshment program you'll lose 64.1% of the market that prefer something else. And if you only offer Pepsi products, you'll lose 65.5% of the market\*

Coke Products  
35.9%

Pepsi Products  
34.5%

All Others  
29.6%



\*Statistics may vary. Based on July 2007 Beverage Industry Magazine report.

# Features & Flexibility In Equipment



*Flexible enough for all your product packaging.*



*\$ Bill acceptors standard and card reader ready.*



*Engineered for years of profitable service.*



*Customer friendly features including money back sensor systems.*

- **Attractive, Clean Styling**

- **Flexible Product Capability**

Why limit your profit potential with a machine that can't adjust to the products most demanded by your customers. Our equipment comes standard with adjustable snack and drink selections that let you adjust the machine on site to ever changing product packaging.

- **Standard \$ Bill and Coin Acceptors**

Never miss a sale because your machine didn't accept what your customer had in their pocket. Our equipment comes standard with dollar bill and coin acceptors with Readers and Credit Card Acceptors available upon request.

- **Quality Engineering**

No other equipment in the industry stands up to the durability, longevity and profitability our equipment provides its owners. Over 75 years of vending engineering experience are behind the development of each piece of equipment.

- **Guaranteed Delivery Sensor Systems**

Most models come with guaranteed delivery sensor systems ensuring your products or money back.

- **Extended Factory Warranty**

Each merchandiser comes with a standard one year full manufacturers parts warranty with a free one year extended warranty with registered proof of purchase.



Manufactured in  
Des Moines, IA U.S.A.



# 800-454-2454

8040 University Boulevard  
Des Moines, IA 50325